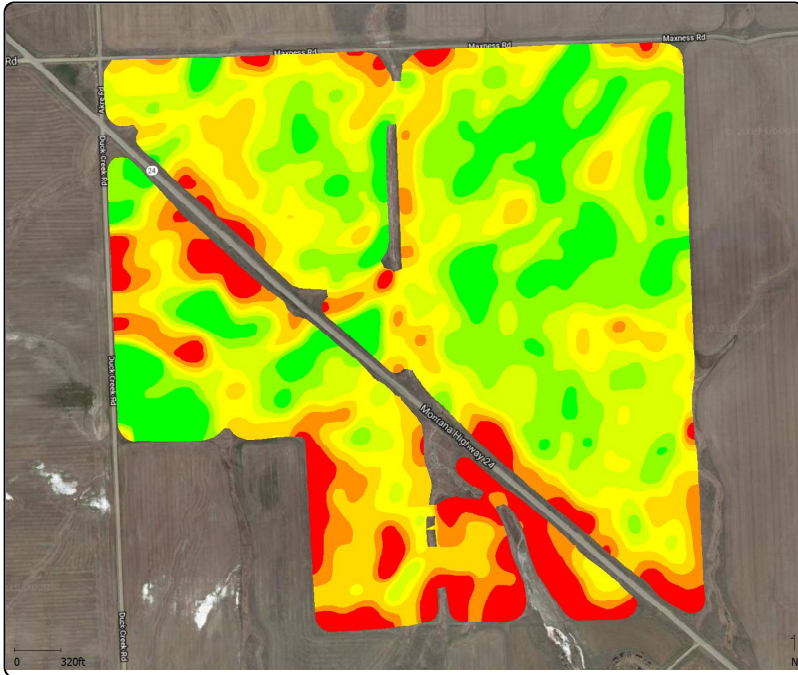


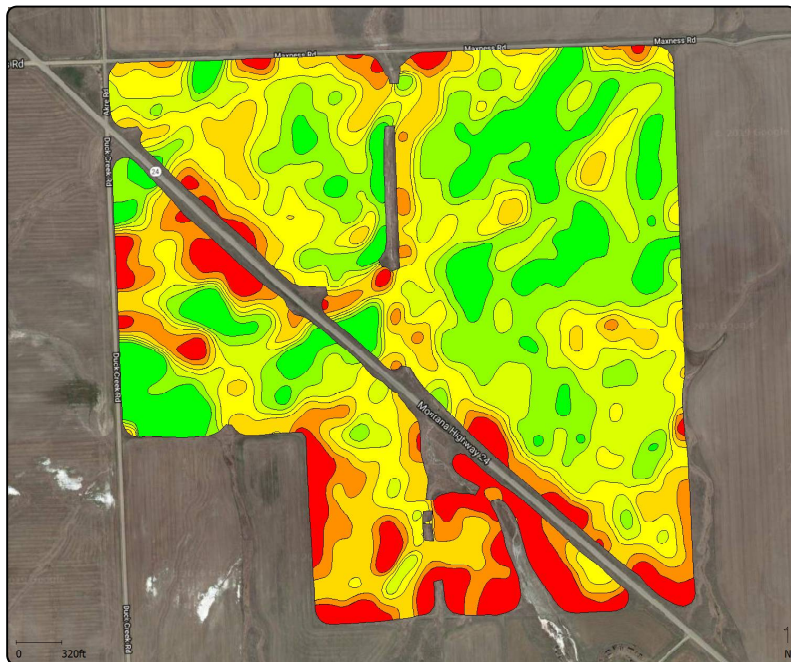
Variable Rate Rx Based on Historical Yield Data



Yield Average 2009-19

Yield (Dry)
(bu/ac)

■	48.47 - 76.43 (38.81 ac)
■	45.57 - 48.47 (54.90 ac)
■	43.04 - 45.57 (56.49 ac)
■	40.44 - 43.04 (48.03 ac)
■	36.96 - 40.44 (43.53 ac)
■	33.99 - 36.96 (23.22 ac)
■	21.08 - 33.99 (25.28 ac)



Variable Rate Rx - Urea

Target Rate (Mass)
(lb/ac)

■	300.0 (38.81 ac)
■	263.0 (54.90 ac)
■	226.0 (56.49 ac)
■	189.0 (48.03 ac)
■	152.0 (43.53 ac)
■	115.0 (23.22 ac)
■	80.0 (25.28 ac)

Field Notes:

