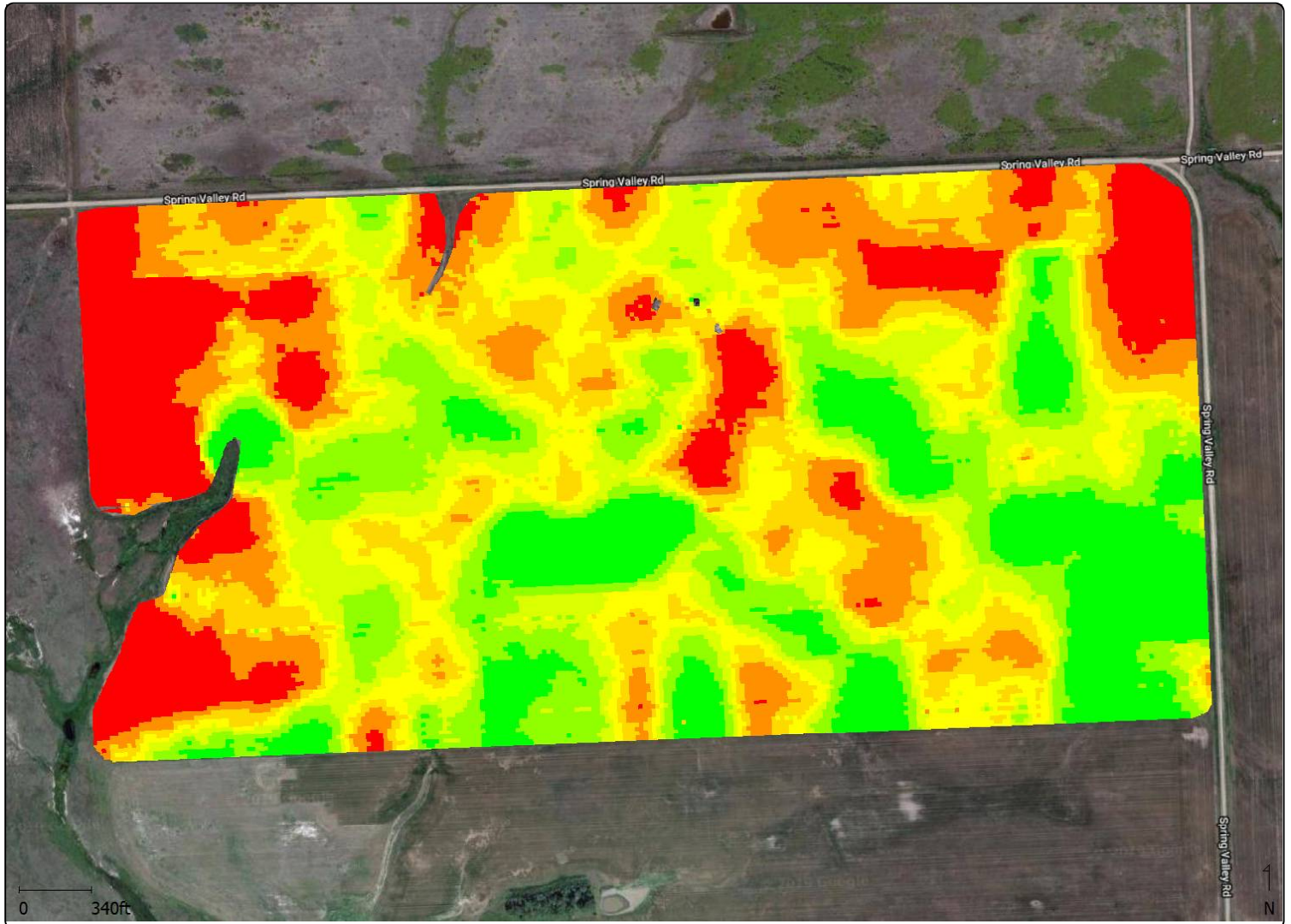


# Variable Rate Rx - Urea Blend



Crop / Product : 60-22-12-18 Canola Urea Blend

Area : 305.97 ac

Total Amount : 65,389 lb

Average Rate : 213.71 lb/ac

Minimum Rate : 160.00 lb/ac

Maximum Rate : 250.00 lb/ac

## Target Rate (Mass) (lb/ac)

■	250.0 (43.76 ac)
■	242.0 (43.96 ac)
■	233.0 (44.15 ac)
■	225.0 (44.09 ac)
■	203.0 (44.17 ac)
■	182.0 (43.85 ac)
■	160.0 (43.16 ac)

