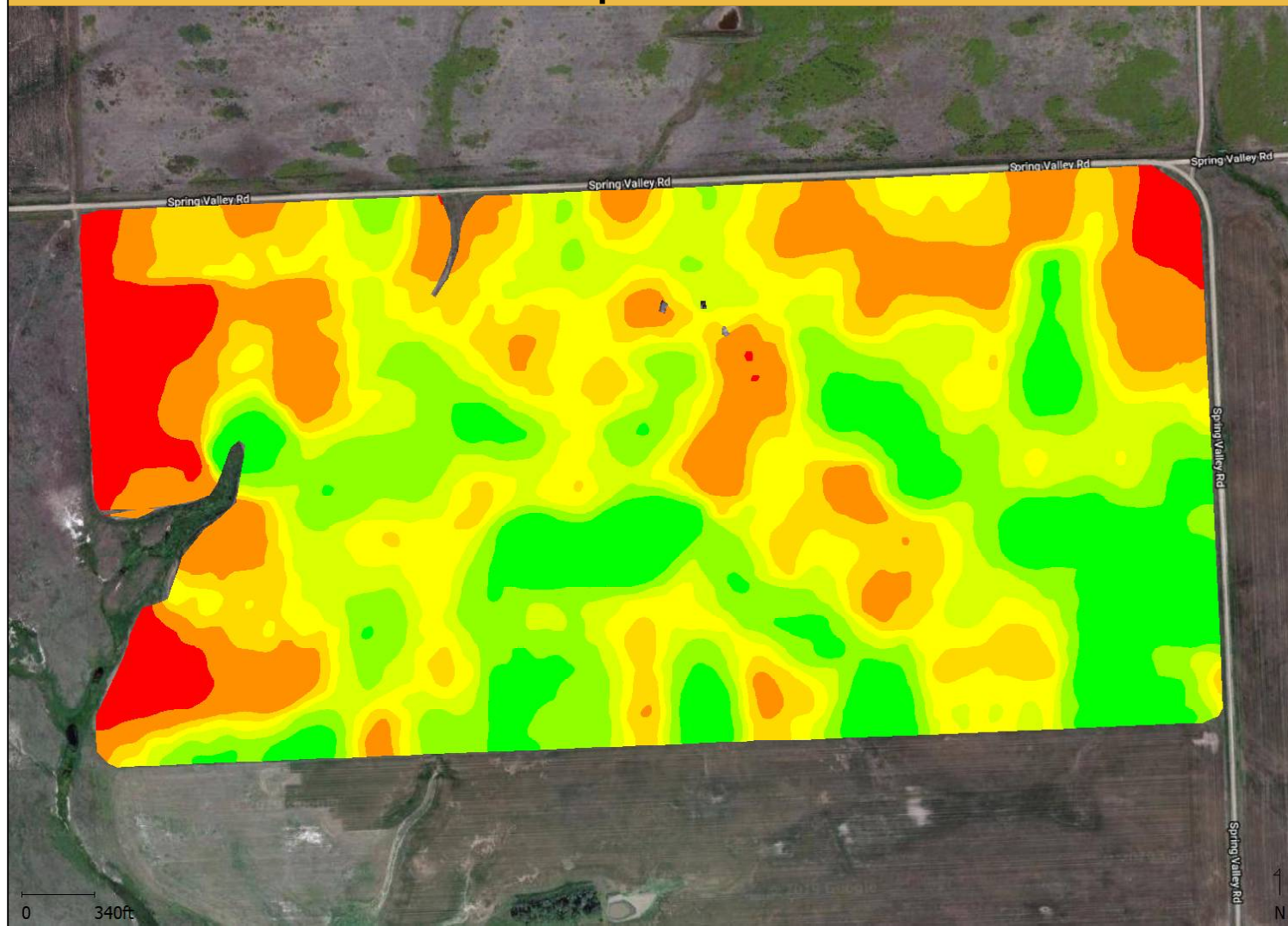


Yield Data Cleaning & Interpolation

Interpolated Data



Year : 2018

Operation : Grain Harvest

Crop / Product : Wheat - Spring

Op. Instance : Harvest - 1

Area : 155.21 ac

Avg. Yield : 26.10 bu/ac

Avg. Moisture : 11.84 %

Area : 155.21 ac

Yield (Dry) (bu/ac)

■	30.85 - 46.85	(43.15 ac)
■	28.05 - 30.85	(49.98 ac)
■	26.38 - 28.05	(51.05 ac)
■	25.05 - 26.38	(50.70 ac)
■	23.67 - 25.05	(46.39 ac)
■	20.12 - 23.67	(47.27 ac)
■	10.58 - 20.12	(18.64 ac)



Raw Data

